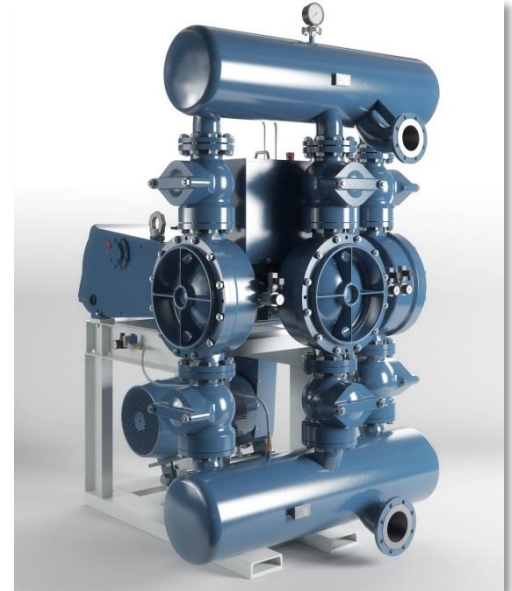


## PISTON DIAPHRAGM PUMPS

## model "TKM"

- Materials:**  
Cast-iron, Cast-iron rubber-lined  
Various stainless steel
- Capacities:**  
0,5 ... 135 m<sup>3</sup>/h
- Pressure:**  
1,6 MPa (16 bar) as standard design,  
higher pressures acc. project requirements
- Temperature of pumped material:**  
Up to 100°C as standard design,  
higher temperatures on demand
- Field of application:**  
Pumping of abrasive and aggressive  
materials. Very gentle pumping of materials  
sensitive to shear
- Remark:**  
The well-tried „TKM“-model  
(Triplex-Kolben-Membranpumpe)!  
produces nearly half of the pulsation  
compared to a 2-cylinder quadruple-acting  
piston diaphragm pump. This is the basis for  
an extremely quiet operation of the pump.
- Constructional features:**

  - Electrically driven  
modular Piston Diaphragm Pump
  - Pump head made of various metal materials
  - Diaphragm pulsation dampener
  - Double diaphragm
  - Internal adjustment of pressure and quantity  
in dependence to the discharge pressure
  - Inspection opening for diaphragm and valves



| [m <sup>3</sup> /h]   | 5 | 10 | 15 | 25 | 35 | 45 | 55 | 60 | 70 | 100 | 135 |
|-----------------------|---|----|----|----|----|----|----|----|----|-----|-----|
| single acting TKM900R |   |    |    |    |    |    |    |    |    |     |     |
| single acting TKM600R |   |    |    |    |    |    |    |    |    |     |     |
| single acting TKM500R |   |    |    |    |    |    |    |    |    |     |     |